



Shell **Gadus** greases now in plastic pails

DESIGNED TO MEET CHALLENGES

WHAT YOU NEED TO KNOW

- Starting mid-2012, all Shell Gadus greases will come in plastic pails.
- The pail colours will match the tiering indicated in the Shell Gadus name.

Shell's new plastic grease pail

- has been thoroughly tested and meets its high standards for durability and handling
- is made of heavy-duty high-density polyethylene (HDPE)
- features an easy-open tear-and-pull lid (Figure 1).

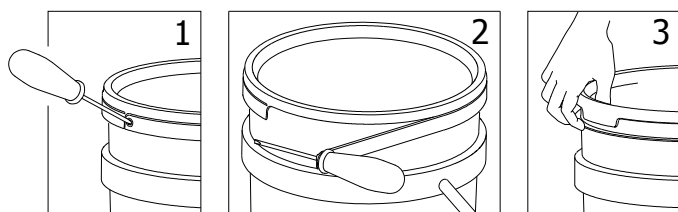


Figure 1: All Shell Gadus greases will come in plastic pails that feature an easy-open tear-and-pull lid.

European plastic pail dimensions

Grease plastic pail dimensions	External	Internal
Top diameter (mm)	300	281
Bottom diameter (mm)	264	261
Height without lid (mm)	412	400

INCREASINGLY EFFICIENT PROTECTION >>>>>

ADVANCED
TIER 4/5

S4 and S5
Helix grey pail



PREMIUM
TIER 3

S3
Yellow pail



MAIN LINE
TIER 2

S1 and S2
Black pail



INDICATING PERFORMANCE: SHELL'S COLOUR-CODED TIERING SYSTEM

Shell's "S" tiering system is designed to help you to select the right Shell grease for your needs (Figure 2). The S suffix and pail and label colour indicate the grease's relative performance.

Figure 2: Shell's colour-coded tiering system indicates the grease's relative performance.

A RANGE OF GREASES TO MEET YOUR NEEDS

